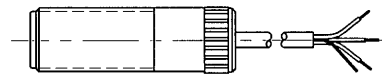


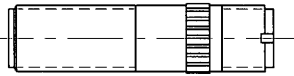
Supply Voltage (Vs): 3.5 - 30 Vdc @ 15 mA, MICROPOWER Model: 2 to 6 Vdc @ 0.06 mA
Pulse Out (Vo): 0 - Vs, 0 - 5 V(TTL), 0 - 10 V, OC (NPN/PNP)
Freq. Range: 0 - 40 kHz (Std.), 100 kHz (Spcl.)
Air Gap: 0.03" Typ., .50" Max. Depending on target mass and velocity.
Temp. Ranges: **2TE**: -40° to 220° F (-40° to 120° C)
3TE: -40° to 290° F (-40° to 145° C)

5/8 M16 Thread Size: 5/8-18, M16x1.5
Length (L): 2.5 - 10" (64-250mm)

0091
0091M (M16)



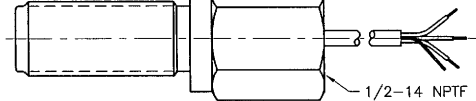
0090
0090M (M16)



0091X 1/2-14 NPT



0091Y 1" HEX



11/16 Thread Size: 11/16-24
Length (L): 2.5 - 3.5" (64-90mm)

0092



0093

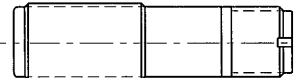


0093X

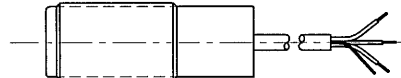


3/4 M18 Thread Size: 3/4-16, 3/4-20, M18x1.5
Length (L): 2.5 - 10" (64-250mm)

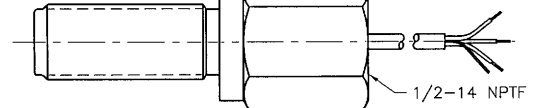
0094
0094M (M18)



0094L
0094ML (M18)



0094Y 1" HEX



Detailed spec-sheets are available for each sensor listed, please contact Spectec for more information.