

Inductance/Resistance Options:

RF4: 4.0 Ohm; .360 mH

RF10: 12.0 Ohm; 1.00 mH

Temp Ranges: 3T, -150 to 330 F (-101 to 165 C) or 5HT, -450 to 450 F (-270 to 232 C)

Compliance: CE: EN55011, EN50022-2

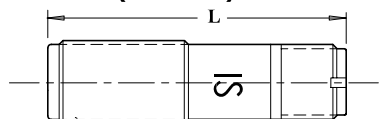
(FM, CSA & CENELEC Pending) Class I, Zone 0, AEX ia IIC  
Class I,II,III, Div. 1  
GROUP ABCDEFG

**IS 72** ◀ FM ▶ Connector with Temperature Probe

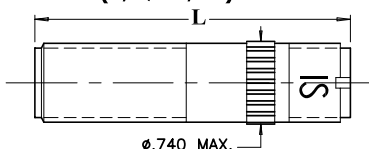
**IS 73** ◀ FM ▶ Lead Wires with Temperature Probe

**5/8** Thread Sizes: 5/8-18 UNF, 11/16-24 UNEF, 3/4-16 UNF,  
**11/16** 3/4-20 UNEF, M16x1.5, M18x1.5  
**3/4** Lengths **L**: 0.5 - 6"  
**M18**

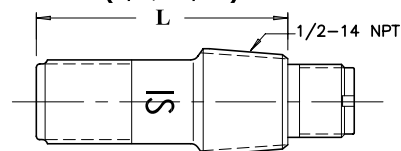
**IS70A (3/4, M18)**



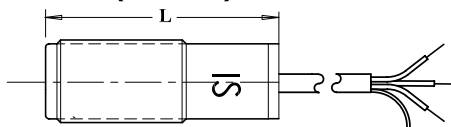
**IS70K (5/8, 11/16)**



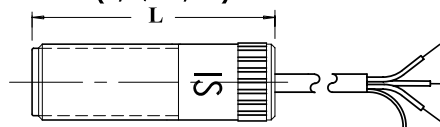
**IS70X (5/8, 11/16)**



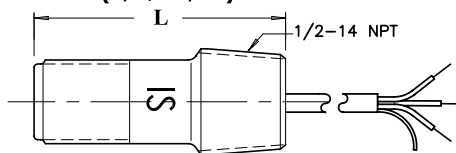
**IS71A (3/4, M18)**



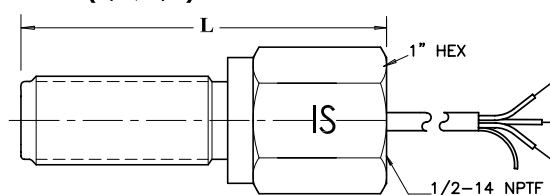
**IS71K (5/8, 11/16)**



**IS71X (5/8, 11/16)**



**IS71Y (5/8, 3/4)**



SPECTEC's intrinsically safe RF pickups are active sensors driven by an external signal conditioner as part of an oscillating circuit. The output of the oscillating circuit is amplitude modulated when a ferrous object passes by the pickup coil. This change in modulation is then converted into a square wave pulse by the signal conditioner for computing and/or further processing.

RF pickups are designed to work with SPECTEC's IS4013 signal conditioner.

#### CAUTION

**This sensor MUST be installed with an FMRC entity approved barrier.**

Installations must meet the requirements of intrinsically safe systems for hazardous (classified) locations and must follow details specified in FMRC engineering control drawing #85046.